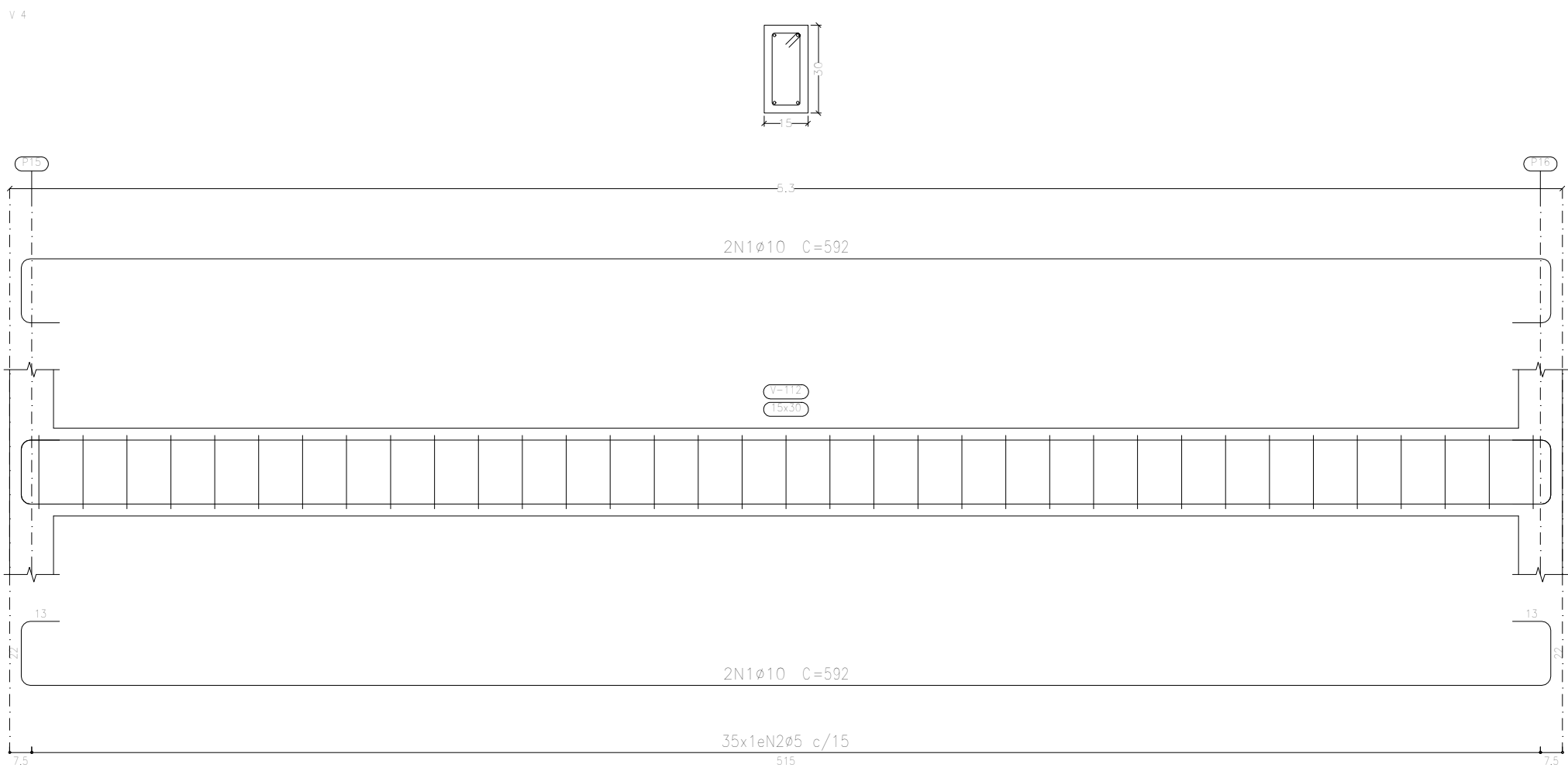
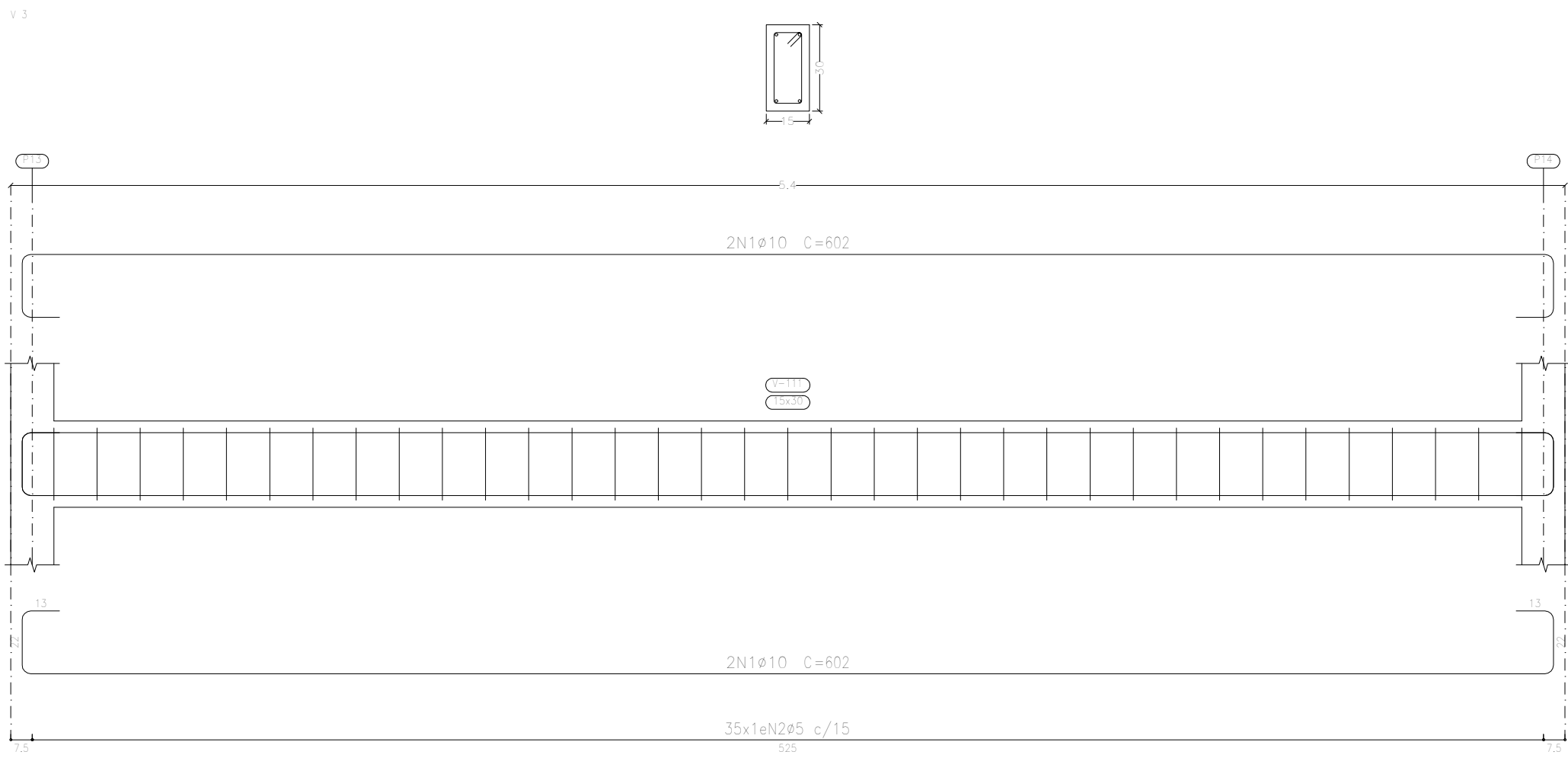
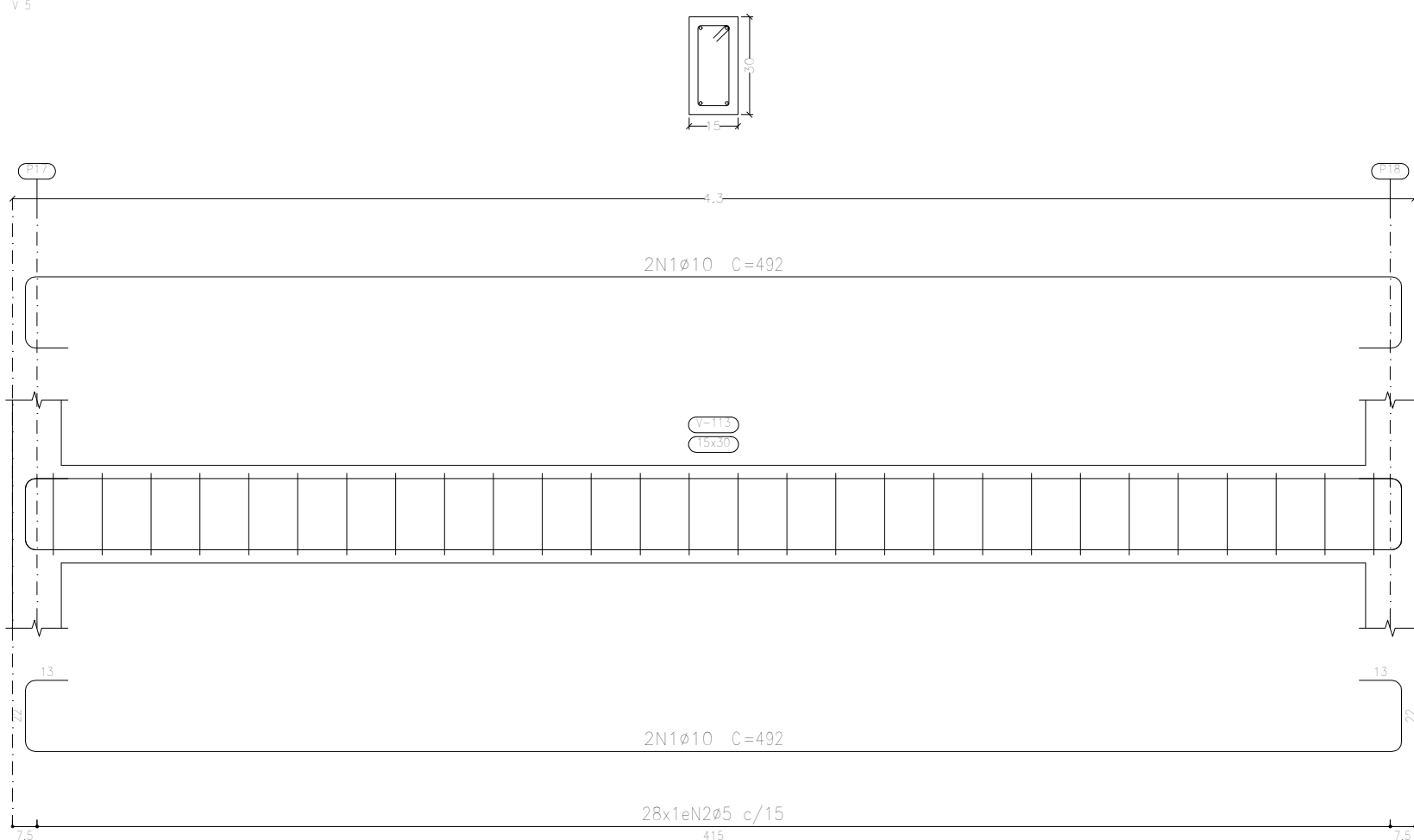
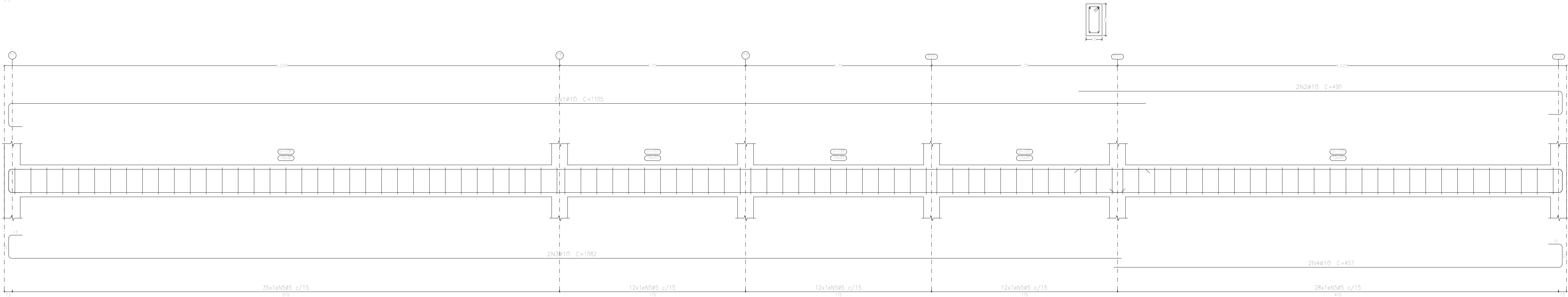
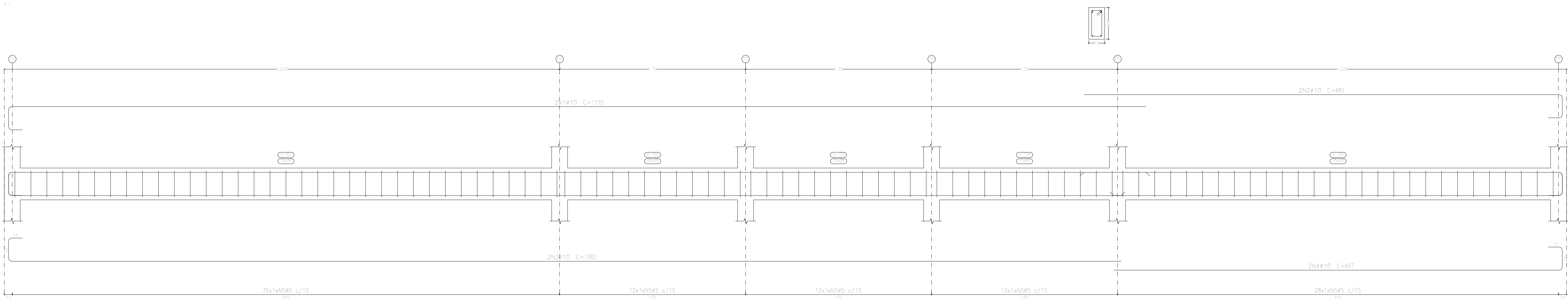


Piso 1  
Desenho de vigas  
Concreto: C25, em geral  
Aço dos barras: CA-50 e CA-60  
Aço dos estribos: CA-50 e CA-60  
Escala vigas 1:20  
Escala seções 1:20  
Escala aberturas 1:20



Elemento	Pos.	Diam.	Q.	Esquema (cm)	Comp. (cm)	Total (cm)	CA-50 (kg)	CA-60 (kg)
V 1	1	Ø10	2		1105	2210	13,6	
	2	Ø10	2		485	970	6,0	
	3	Ø10	2		1082	2164	13,3	
	4	Ø10	2		457	914	5,6	
	5	Ø5	99		78	7722		12,1
Total+10%:						42,4	13,3	
V 2	1	Ø10	2		1105	2210	13,6	
	2	Ø10	2		490	980	6,0	
	3	Ø10	2		1082	2164	13,3	
	4	Ø10	2		457	914	5,6	
	5	Ø5	99		78	7722		12,1
Total+10%:						42,4	13,3	
V 3	1	Ø10	2		602	2408	14,8	
	2	Ø5	35		78	2730		4,3
Total+10%:						16,3	4,7	
V 4	1	Ø10	4		592	2368	14,6	
	2	Ø5	35		78	2730		4,3
Total+10%:						16,1	4,7	
V 5	1	Ø10	4		492	1968	12,1	
	2	Ø5	28		78	2184		3,4
Total+10%:						13,3	3,7	
							Ø5:	0,0
							Ø10:	39,7
							Total:	130,5
							Total:	130,5



Ampliação Transbordo		Data:	07/02/2024
Local: Transbordo Municipal		Número de desenho:	
Promotor:			
Projeto Estrutural		Escala:	Indicada
Eduardo Rampanelli Tosetto Engenheiro Civil Número do CREA: 1220503037		Data:	07/02/2024